

**We communicate. We collaborate. We create.**

"We set ourselves apart by utilizing inter-disciplinary teams, innovative technologies, and adaptive strategies to create vibrant, energetic, sustainable and integrated human scale built environments."



*We like to think of ourselves as dreamers and doers. We are caring, intelligent, vibrant, and fun.*



## New Office in Halifax, Nova Scotia

We are absolutely thrilled to be a part of the warm and inviting fabric of the Maritimes community! This has been a year in the making, and we now offer our Landscape Architecture and Civil Engineering services from our downtown Halifax office. We look forward to spreading our wings across the provinces and engaging with the local communities, developers and consultants to provide integrated nature-based design solutions to many projects within the region.



**What's New**

**Landscape Architecture**



### Upper Mission Court

Situated in the Trestle Ridge development in Kelowna's Upper Mission, this private property has been fun project for the team. We have developed a concept plan, with a 3D model and perspectives, to effectively communicate the envisioned design to our clients, with construction under way.



### Landmark District

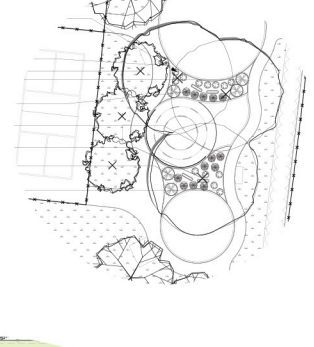
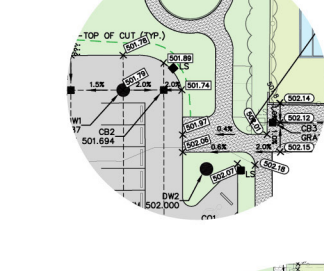
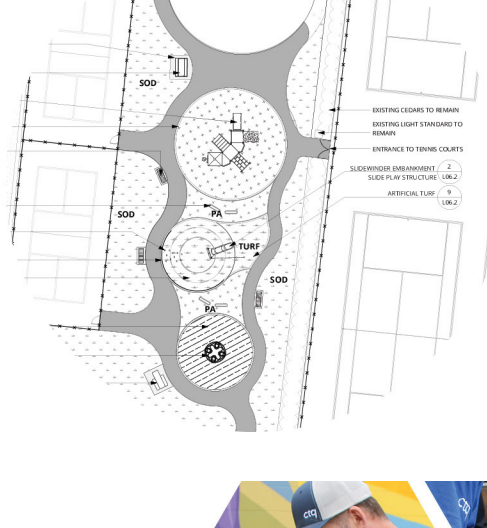
The goal was to create an integrated master plan based on the 2040 OCP's land use designations, transportation plans, and enhanced public realm to transform Landmark over the next 20 years. CTQ used a two-phase approach: first, engaging with the Stober Group and stakeholders to explore development opportunities aligning with the City's future planning goals; second, using a 3D digital model to visualize the proposed character and integration of Landmark Town Centre within the larger city context.



**Civil Engineering & Landscape Architecture**

### West Kelowna Fire Hall No.22

This development is a new firehall and community hall, and adjacent public park revitalization, including pickleball courts, playground space and parking. The civil and landscape teams worked together to design a number of solutions for the site, redesigning the grading to ensure the site was fully accessible for both existing activities and the future amenities within the site, creating a cohesive layout for both active and passive spaces. Co-ordination with the City and Fire department was crucial to ensure the design met their specific requirements too. Interaction with nature is fundamental to our health and well-being and the landscape design aims to provide this benefit to all visitors to the site, as well as enhancing the surrounding neighbourhood.



**Summer Seasonal Tips**

#### 1. Pull up Weeds

Many types of weeds thrive during the summer season and can spread quickly. Remove these from your garden as soon as you can to prevent weeds from stealing moisture and nutrients from your plants.

#### 2. Plant Selection

Choose plant material that are heat-tolerant and drought-resistant. Group plants with similar water requirements together. Dead head flowering plants to encourage second flushes.

#### 3. Soil

Organic: Add compost to improve soil structure and retain water. Mulching: This helps with water conservation and maintaining soil temperature. It prevents soil from overheating and keeps the root zone protected.

#### 4. Watering

Deep and Infrequent Watering: Water your plants deeply but less often to encourage deep root growth. Morning Watering: Water your plants in the early morning to minimize evaporation. Avoid watering during the warmest time of the day as it may scorch leaves.

#### 5. Watch for Pests and Diseases

Keep an eye on pests and diseases. This should be done throughout the entire growing season, but midsummer is an important time to fight plant-destroying bugs and diseases. Some of the most common problems to watch for include cucumber beetles, grasshoppers, Japanese beetles, tomato hornworms, powdery mildew, black spot, and rust.

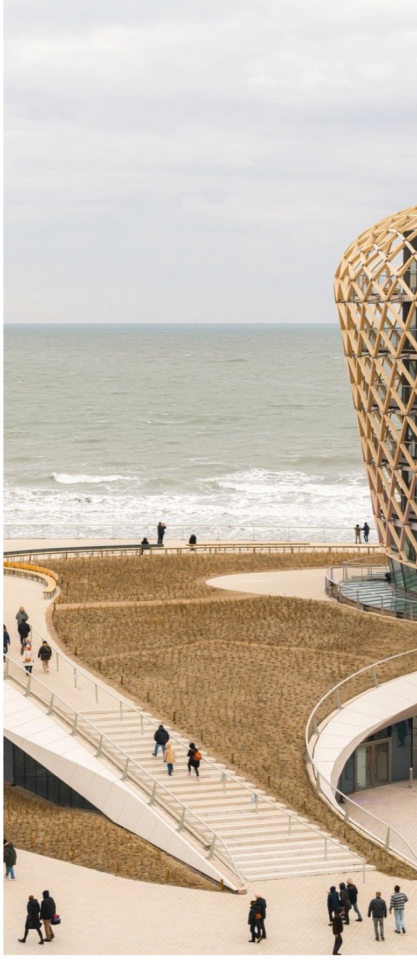
#### 6. Harvest Vegetables

Harvesting will encourage your plants to continue producing and limits pest and diseases problems.

**External Inspirational Project**

SILT Middelkerke by: Delva

LANDEZINE | LANDSCAPE ARCHITECTURE PLATFORM



## Follow Us on Social Media!

We share our projects, company events, and industry related content.

Follow us on LinkedIn, Facebook, and Instagram.



**CTQ Culture**



*We strive to make the world a better place, even if only in the smallest way.*



Copyright (C) 2023 CTQ Consultants. All rights reserved.

Our mailing address is:

CTQ Consultants 1334 St Paul St Kelowna, BC V1Y 2E1Canada

You are receiving this e-mail because you are on our mailing list.

If you do not want to receive our Newsletters, you can

[unsubscribe](#).

